



Screwdriving technology

Automation

Air motors

Air tools

# DEPRAG

**NEW  
MICROMAT-E**  
for lowest torque ranges

**MICROMAT-E** torque ranges between 0.03 - 0.8 Nm

**MINIMAT-E** torque ranges between 0.06 - 18 Nm

## EC-Screwdriver Spindles for stationary use The brushless Electric Screwdriver Spindles

The DEPRAG EC Screwdriver Spindles allow free programming of the screw tightening process. Within the power range of the selected spindle, the torque value, speed, stand-by and direction of rotation can be adjusted individually to the assembly requirement.

The new MICROMAT-E is able to reach even the lowest possible torque ranges.

When using these spindles in Robot applications, i.e. in our assembly cell "DCAM", different screwdriving sequences on different screw

locations may be achieved within one assembly cycle.

The brushless electric motors provide nearly maintenance-free operation. They are ideally suited for the tightening of screws due to their outstanding dynamics and an achievement of high peak torque values.

Integrated monitoring of torque and angle values allow the exact control of the screw tightening process, as well as the documentation of all important process parameters.



MINIMAT-E

MICROMAT-E



The operation of the screwdriver spindle requires a programmable sequence controller (AST 10) with integrated amplifier and a motor cable (available in different lengths). The sequence controller offers standard screwdriving programs for tightening screws to a specific torque value respectively loosening at a specific angle value. Their parameters are adjustable directly via the controller's keyboard.

Special screwdriving sequences are easy to create: standard assembly steps, already stored in the controller, can be selected and comfortably built up to form a complete assembly process.

This happens via the integrated web-server's PC operator board. No special PC software is required – only a normal web browser (such as MS explorer) and an Ethernet port. Optionally available is an update service for the AST 10 which provides continuous update of the controller's function and control software.

The controller's integrated display and operating unit indicates the operating mode and assembly status. It also allows a direct change of parameters (speed, torque and angle values, etc..) within the assembly process and without the need of a PC connection.

In automatic mode, the AST 10 communicates with the system's PLC. Screwdriving programs can be selected and started. After completion of the assembly process, the AST 10 will report the status of the result to the PLC.

An Ethernet port allows the network of more screwdriver spindles (i.e. multi spindle systems) with centralized process monitoring (graphics, statistics, individual data sets, etc..).

## Technical Data

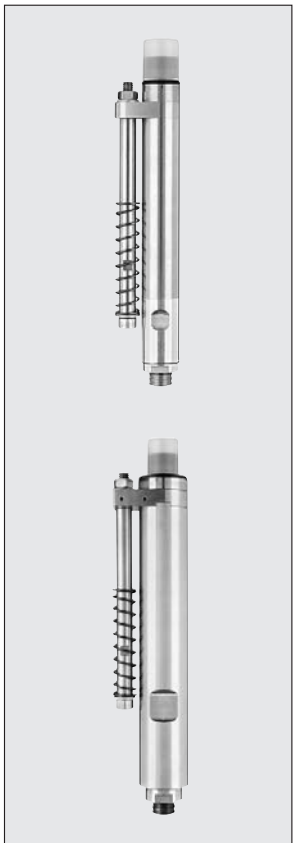
### MICROMAT-E EC-Screwdriver Spindles, stationary



EC-Screwdriver	type order no.	320E19-0002 405024 A	320E19-0005 405024 C	320E19-0008 405024 B
Torque min.	Nm/in.lbs	0.03 / 0.27	0.08 / 0.7	0.15 / 1.3
Torque max. *)	Nm/in.lbs	0.2 / 1.8	0.5 / 4.4	0.8 / 7.1
Speed min.	rpm	150	120	100
Speed max. *)	rpm	1500	1200	1000
Length	mm/in.	190 / 7 <sup>31</sup> / <sub>64</sub>	190 / 7 <sup>31</sup> / <sub>64</sub>	190 / 7 <sup>31</sup> / <sub>64</sub>
Weight	kg/lbs	0.25 / 0.55	0.25 / 0.55	0.27 / 0.59
Noise level	dB (A)	60	60	60
Line voltage (DC)	V	48	48	48
Internal hex drive DIN 3126		B3 (3 mm)	B3 (3 mm)	B3 (3mm)
Suitable inserting tools and connection parts wit inserting end DIN 3126		A3 (3 mm)	A3 (3 mm)	A3 (3mm)

\*) as per VDI/VDE 2647 Directive

### MINIMAT-E EC-Screwdriver Spindles, stationary



EC-Screwdriver	type order no.	320E27-0004 393984 A	320E27-0010 393984 B	320E27-0024 393984 C	320E27-0042 393984 D
Torque min.	Nm/in.lbs	0.06 / 0.5	0.15 / 1.3	0.4 / 3.5	0.7 / 6.2
Torque max. *)	Nm/in.lbs	0.4 / 3.5	1.0 / 8.85	2.4 / 21.2	4.2 / 37.2
Speed min.	rpm	60	50	50	40
Speed max. *)	rpm	1200	1000	700	400
Diameter	mm/in.	27 / 1 <sup>1</sup> / <sub>16</sub>	27 / 1 <sup>1</sup> / <sub>16</sub>	27 / 1 <sup>1</sup> / <sub>16</sub>	27 / 1 <sup>1</sup> / <sub>16</sub>
Length	mm/in.	220 / 8 <sup>21</sup> / <sub>32</sub>	232 / 9 <sup>9</sup> / <sub>64</sub>	228 / 8 <sup>31</sup> / <sub>32</sub>	240 / 9 <sup>29</sup> / <sub>64</sub>
Weight	kg/lbs	0.36 / 0.8	0.42 / 0.9	0.42 / 0.9	0.46 / 1
Noise level	dB (A)	60	60	60	60
Line voltage (DC)	V	48	48	48	48
Internal hex drive DIN 3126		B3 (3 mm)	B3 (3mm)	F6.3 (1/4")	F6.3 (1/4")
Suitable inserting tools and connection parts wit inserting end DIN 3126		A3 (3 mm)	A3 (3mm)	E6.3 (1/4")	E6.3 (1/4")
EC-Screwdriver	type order no.	320E36-0060 404407 A	320E36-0120 404407 B	320E36-0180 404407 C	
Torque min.	Nm/in.lbs	1 / 8.85	2 / 17.7	3 / 26.6	
Torque max. *)	Nm/in.lbs	6 / 53.1	12 / 106.2	18 / 159.3	
Speed min.	rpm	70	35	25	
Speed max. *)	rpm	740	380	280	
Diameter	mm/in.	36 / 1 <sup>27</sup> / <sub>64</sub>	36 / 1 <sup>27</sup> / <sub>64</sub>	36 / 1 <sup>27</sup> / <sub>64</sub>	
Length	mm/in.	260 / 10 <sup>15</sup> / <sub>64</sub>	260 / 10 <sup>15</sup> / <sub>64</sub>	260 / 10 <sup>15</sup> / <sub>64</sub>	
Weight	kg/lbs	1.12 / 2.5	1.12 / 2.5	1.14 / 2.5	
Noise level	dB (A)	62	62	62	
Line voltage (DC)	V	48	48	48	
Internal hex drive DIN 3126		F6.3 (1/4")	F6.3 (1/4")	F6.3 (1/4")	
Suitable inserting tools and connection parts wit inserting end DIN 3126		E6.3 (1/4")	E6.3 (1/4")	E6.3 (1/4")	

\*) as per VDI/VDE 2647 Directive

## Required Accessories

<b>Sequence controller</b> prepared for Profibus with integrated Profibus module for screwdriver types 320E19-.. and 320E27-..	<b>type</b> order no. order no.	<b>AST 10-1-P</b> 385440 B 385440 P
<b>Sequence controller</b> prepared for Profibus with integrated Profibus module for screwdriver type 320E36-..	<b>type</b> order no. order no.	<b>AST 10-2-P</b> 385441 B 385441 P
Power unit (AC) optional	V / Hz V / Hz	230 / 50 (60) 115 / 50 (60)
Power consumption AST 10-1	VA	350
Power consumption AST 10-2	VA	600
Insulation		IP 54
LC display		4 x 20
Membrane keyboard		yes
RS 232 interface		yes
Ethernet		yes
Amount of connectable Screwdrivers		1
Dimension (W x H x D)	mm / in.	160 x 295 x 200 / 6 <sup>19</sup> / <sub>64</sub> x 11 <sup>39</sup> / <sub>64</sub> x 7 <sup>7</sup> / <sub>8</sub>
Weight (AST 10-1 / AST 10-2)	kg / lbs	5.8/6 / 12.8/13.2

<b>Motor cable</b> (Spindle to sequence controller)		
Length 2.5 m / 8.2 ft. (standard)	<b>type</b> order no.	<b>KMO AST10-2,5m</b> 385442 A
Length 5 m / 16.4 ft.	<b>type</b> order no.	<b>KMO AST10-5m</b> 385442 B
Length 8 m / 26.2 ft.	<b>type</b> order no.	<b>KMO AST10-8m</b> 385442 C
Length 12 m / 39.4 ft.	<b>type</b> order no.	<b>KMO AST10-12m</b> 385442 D
<b>alternative</b>		
<b>Motor cable with 90° angle connection</b> Length 2.5 m / 8.2 ft.	<b>type</b> order no.	<b>KMO-AST10-2,5m-W</b> 385442 E
Length 5 m / 16.4 ft.	<b>type</b> order no.	<b>KMO-AST10-5m-W</b> 385442 F
Length 8 m / 26.2 ft.	<b>type</b> order no.	<b>KMO-AST10-8m-W</b> 385442 G
Length 12 m / 39.4 ft.	<b>type</b> order no.	<b>KMO-AST10-12m-W</b> 385442 H

<b>Power supply cable</b> (Sequence controller)		
Length 1.8 m / 5.9 ft.	<b>type</b> order no.	<b>KN AST10-EU</b> 385443 A
Length 1.8 m / 5.9 ft.	<b>type</b> order no.	<b>KN AST10-US</b> 385443 B
Length 2.5 m / 8.2 ft.	<b>type</b> order no.	<b>KN AST10-China</b> 385443 C

## Optional Equipment

Programm. cable (PC to AST 10)	order no.	831902
Connection cable (AST 10 to PC)	order no.	380449 B
Plug RJ45-IP54	order no.	385453 A
Cable AST 10 to printer ND 100	order no.	385452 B
<b>Printer</b>	<b>type</b> order no.	<b>ND 100</b> 823476
Part sensor capacitive M18	order no.	354841 C
Expansion Kit Profibus	order no.	385501 A

<b>AST 10 SPS Remote Interface</b> for fully automatic Screwdriving graph storing		
Interface LPT-24 V	order no.	200788
PC Software AST 10 RCPC	order no.	200790

<b>Software</b>		
Activation code Graph 10E	order no.	202698
Activation code AST 10 Datalogger	order no.	202699

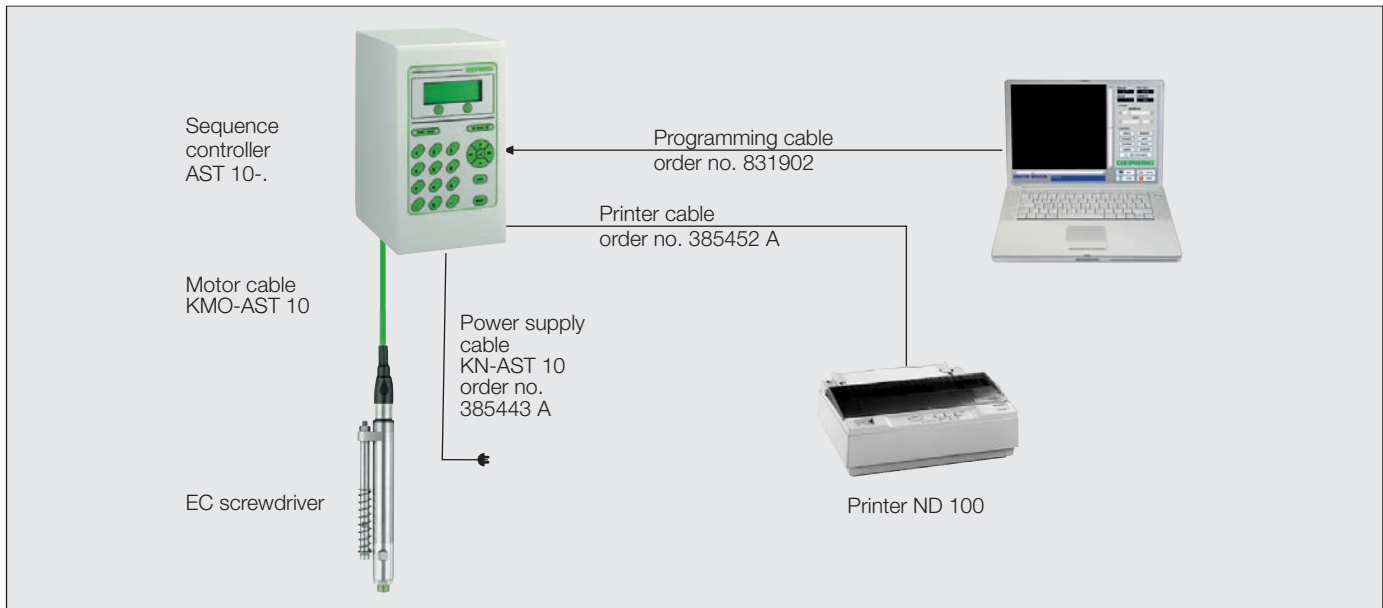


Sequence Controller AST 10-.

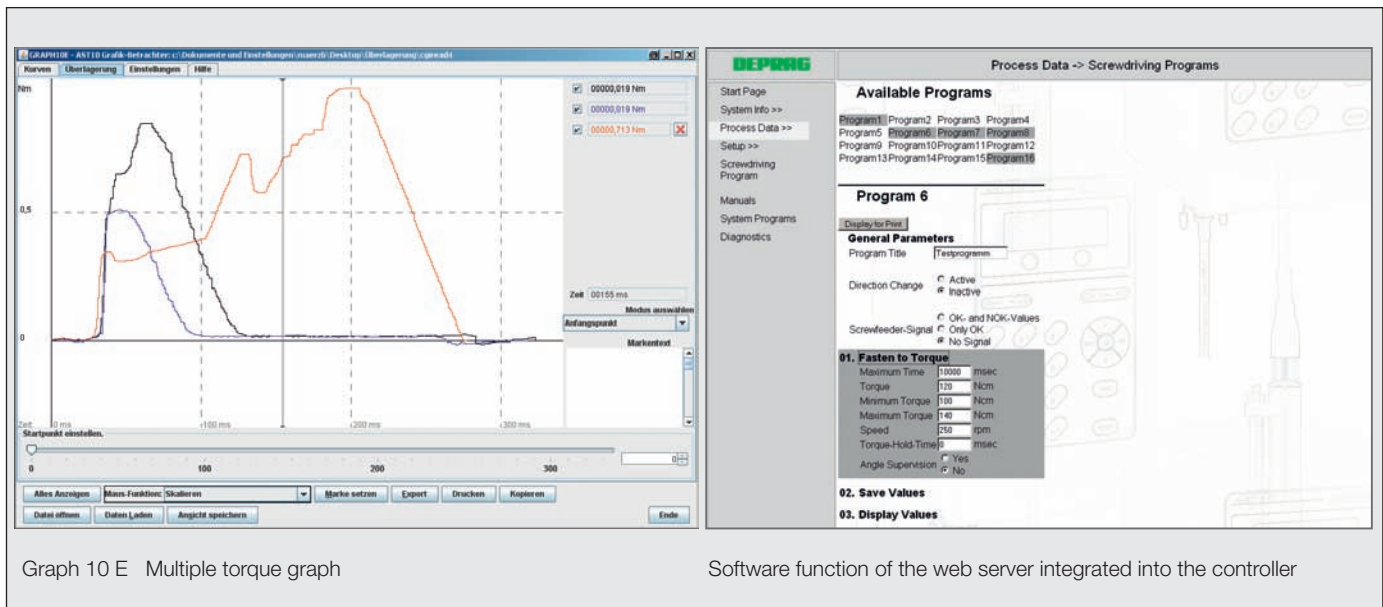


Printer ND 100

## Example



## Examples of AST 10 Software Functions



# DEPRAG DEPRAG

## DEPRAG INC.

P.O. Box 1554 · Lewisville, Texas 75067 - 1544  
 640 Hembry Street · Lewisville, Texas 75057 - 4728  
 Phone (972) 221 - 8731 · FAX (972) 221 - 8163  
 TOLL FREE (800) 4 DEPRAG  
 www.deprag.com  
 deprag@depragusa.com

## DEPRAG SCHULZ GMBH u. CO.

P.O. Box 1352, D-92203 Amberg, Germany  
 Kurfürstenring 12-18, D-92224 Amberg  
 Phone (09621) 371-0, Fax (09621) 371-120  
 www.deprag.com  
 info@deprag.de



CERTIFIED AS PER DIN EN ISO 9001