



DEPRAG

MINIMAT

MINIMAT-Handheld Screwdrivers angle head design

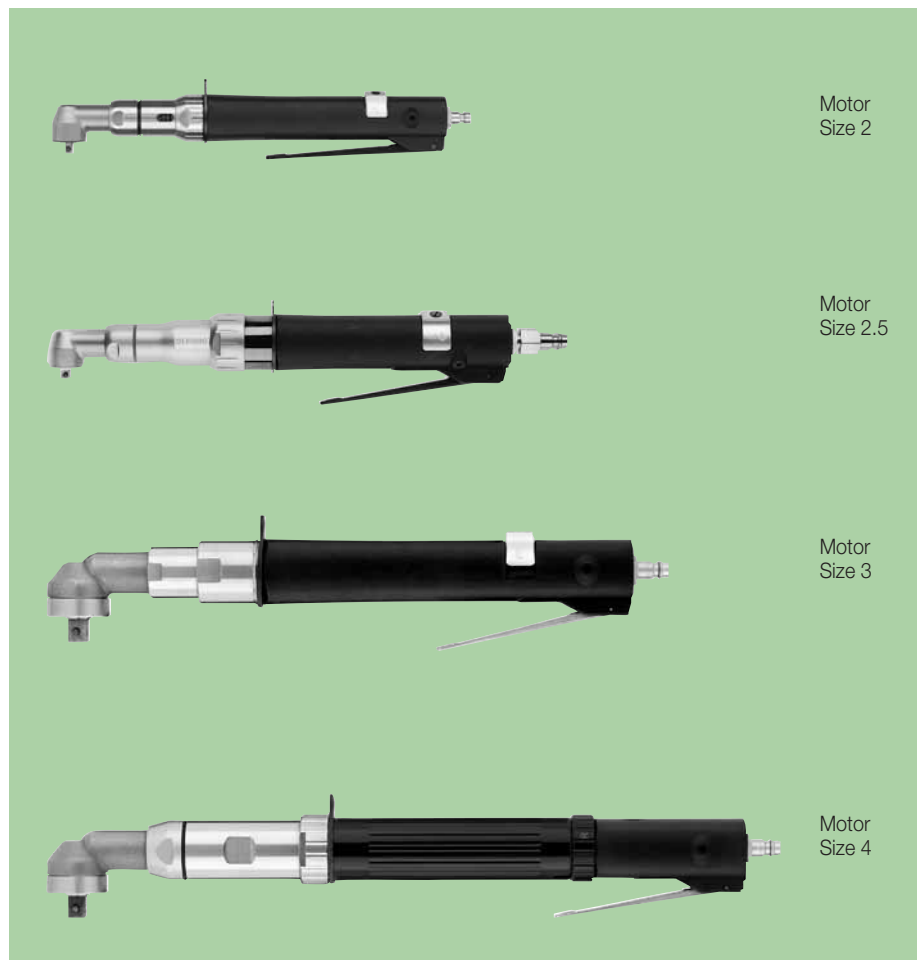
from 0.3 to 65 Nm (3 to 575 in.lbs)

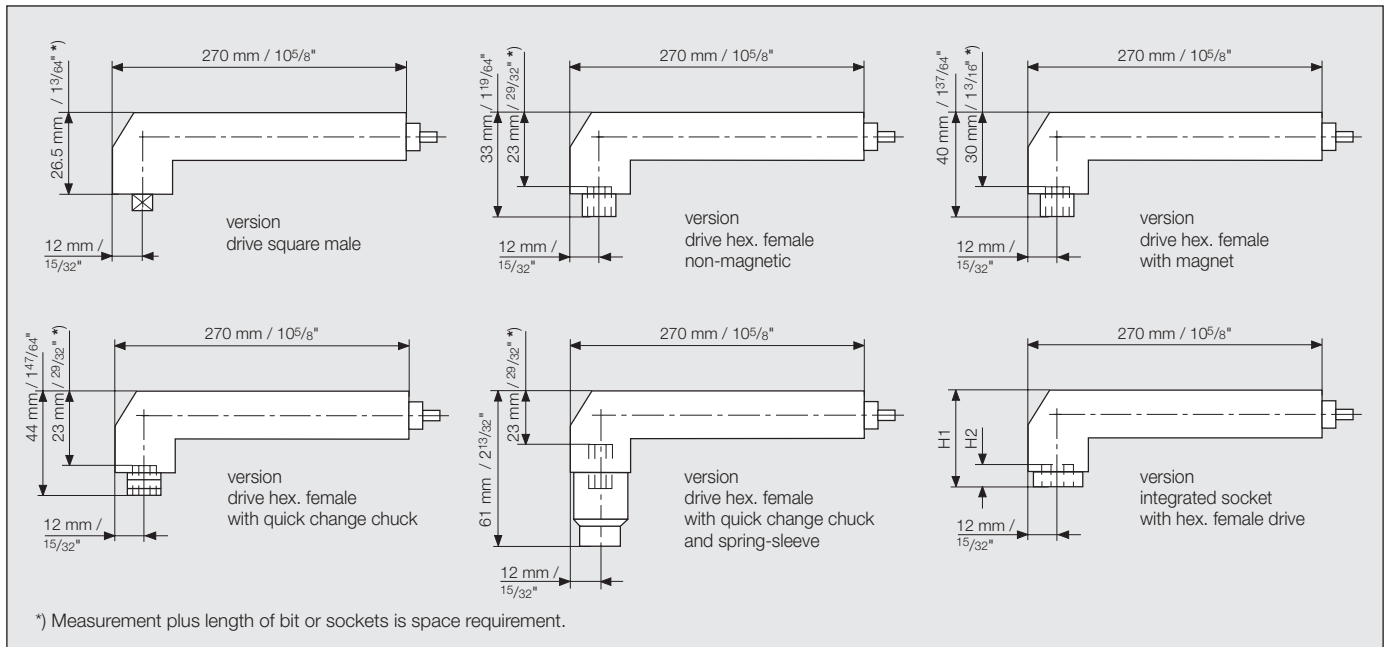
- **Extreme high Torque Accuracy and Repeatability**
- **For tight Assembly Areas**
- **Swivel Handle**
- **Ergonomic Design, long life, low noise**

The DEPRAG-MINIMAT- Screwdrivers with angle head design are preferably used for assemblies in tight areas. Because of the

angle head design even large torque values can be managed by hand without problems.

The handle is linked with the angle head by a plug connection and can be arrested in different positions. The screwdriver with motor size 2 and 2.5 is a new development and has an optimized angle head which guarantees a very accurate torque transfer with little space required.





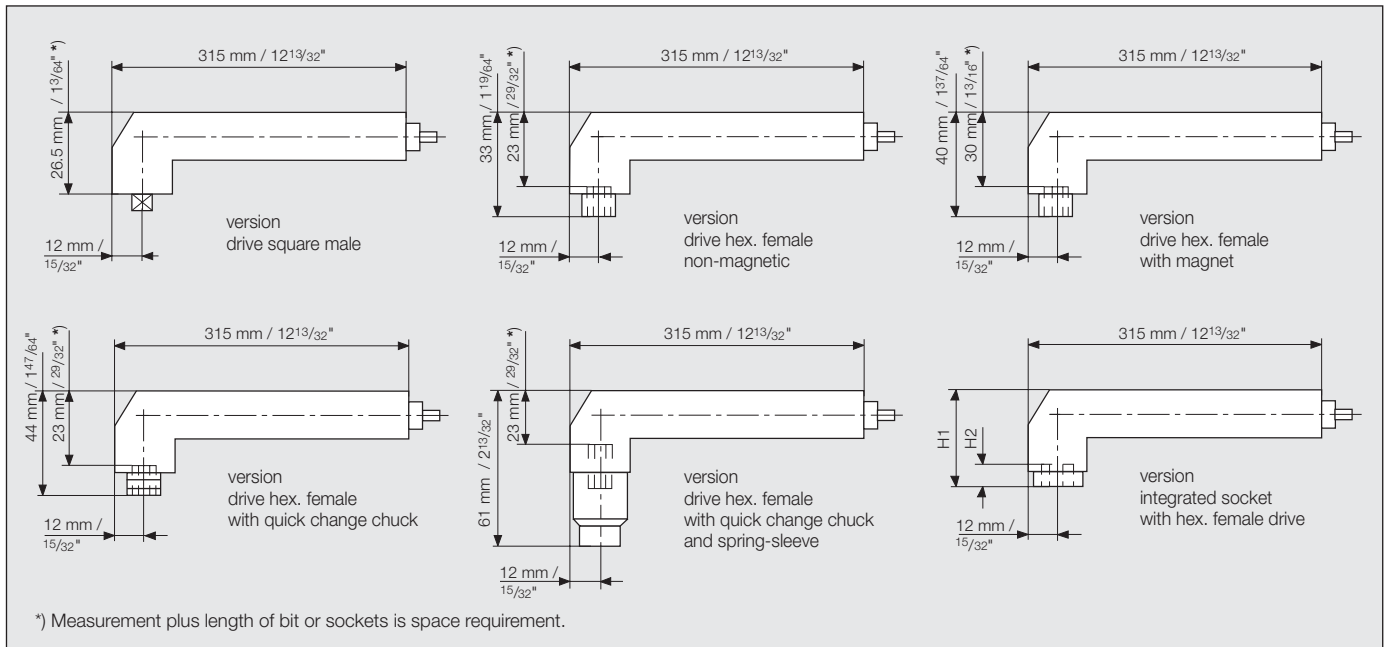
Technical Data

Screwdriver Style	Motor Size 2			
	type order no.	377-321 U 386530 B	377-421 U 386530 D	377-521 U 386530 C
Driver reversible, right shut-off drive square male 1/4"	type order no.	377-321 U-E10 390887 B	377-421 U-E10 390887 D	377-521 U-E 10 390887 C
Driver reversible, right shut-off drive hex. female 1/4" non-magnetic	type order no.	377-321 U-D 390883 B	377-421 U-D 390883 D	377-521 U-D 390883 C
Driver reversible, right shut-off drive hex. female 1/4" with magnet	type order no.	377-321 U-DM 390884 B	377-421 U-DM 390884 D	377-521 U-DM 390884 C
Driver reversible, right shut-off drive hex. female 1/4" with quick change chuck	type order no.	377-321 U-F 390885 B	377-421 U-F 390885 D	377-521 U-F 390885 C
Driver reversible, right shut-off drive hex. female 1/4" with quick change chuck and spring-sleeve	type order no.	377-321 U-FH 390886 B	377-421 U-FH 390886 D	377-521 U-FH 390886 C
Driver reversible, right shut-off integrated socket with hex. female drive	type order no.	377-321 U-SW.. 390925 / 1 B 390925 / 2 B 390925 / 3 B 390925 / 4 B	377-421 U-SW.. 390925 / 1 D 390925 / 2 D 390925 / 3 D 390925 / 4 D	377-521 U-SW.. 390925 / 1 C 390925 / 2 C 390925 / 3 C 390925 / 4 C
screws	up to	M 4	M 5	M 5
torque min.	Nm / in. lbs	0.4 / 4	0.4 / 4	0.3 / 3
torque max.	Nm / in. lbs	3.5 / 31	4.5 / 40	6.5 / 57
speed, idling	rpm	780	500	350
air consumption	m ³ /min / cfm	0.3 / 11	0.3 / 11	0.3 / 11
height (H1) for AF 6 - AF 10 mm / AF 13 mm	mm in.	29 / 30.5 1 9/64 / 1 13/64	29 / 30.5 1 9/64 / 1 13/64	29 / 30.5 1 9/64 / 1 13/64
height (H2) for AF 6 / 8 / 10 / 13 mm	mm in.	3.5 / 4 / 4 / 5.5 9/64 / 5/32 / 5/32 / 7/32	3.5 / 4 / 4 / 5.5 9/64 / 5/32 / 5/32 / 7/32	3.5 / 4 / 4 / 5.5 9/64 / 5/32 / 5/32 / 7/32
weight	kg / lbs	0.85 / 1.9	0.85 / 1.9	0.85 / 1.9
noise level	dB (A)	67	67	67
air hose dia.	mm / in.	6 / 1/4	6 / 1/4	6 / 1/4

Performance data relate to an air pressure of 6.3 bar (90 PSI)

Standard Equipment: hose coupling with nozzle and nipple · Set of Torque Adjustment Tools · Set of Clutch Springs

Optional Equipment: exhaust hose (1 m /3.3 ft.) order no. 38 96 53 A
suitable for 377-...U-FH types: vacuum connector for screw suction order no. 392636 A

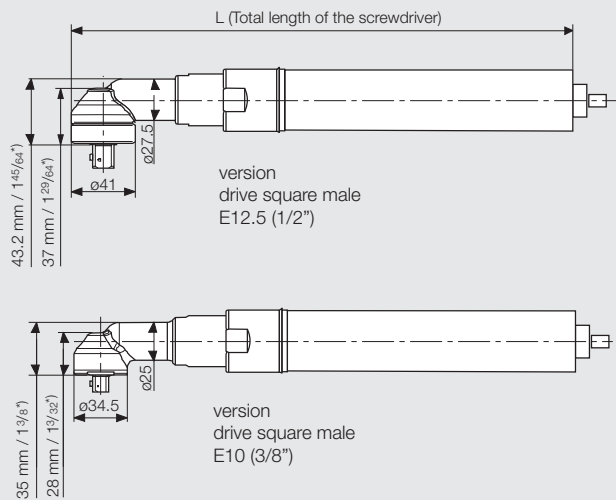


Technical Data

Screwdriver Style		Motor Size 2.5	
Driver reversible, right shut-off drive square male 1/4"	type order no.	376-7251 U 378385 A	376-3251 U 378385 B
Driver reversible, right shut-off drive square male 3/8"	type order no.	376-7251 U-E 10 382687 A	376-3251 U-E 10 382687 B
Driver reversible, right shut-off drive hex. female 1/4" non-magnetic	type order no.	376-7251 U-D 382683 A	376-3251 U-D 382683 B
Driver reversible, right shut-off drive hex. female 1/4" with magnet	type order no.	376-7251 U-DM 382684 A	376-3251 U-DM 382684 B
Driver reversible, right shut-off drive hex. female 1/4" with quick change chuck	type order no.	376-7251 U-F 382685 A	376-3251 U-F 382685 B
Driver reversible, right shut-off drive hex. female 1/4" with quick change chuck and spring-sleeve	type order no.	376-7251 U-FH 382686 A	376-3251 U-FH 382686 B
Driver reversible, right shut-off integrated socket with hex. female drive	type order no.	376-7251 U-SW..	376-3251 U-SW..
	AF 6 mm	order no. 386139 / 1 A	386139 / 1 B
	AF 8 mm	order no. 386139 / 2 A	386139 / 2 B
	AF 10 mm	order no. 386139 / 3 A	386139 / 3 B
	AF 13 mm	order no. 386139 / 4 A	386139 / 4 B
screws	up to	M 6	M 6
torque min.	Nm / in. lbs	1.5 / 13	1.5 / 13
torque max.	Nm / in. lbs	8 / 71	15 / 133
speed, idling	rpm	810	410
air consumption	m ³ /min / cfm	0.35 / 12	0.35 / 12
height (H1) for AF 6 - AF 10 mm / AF 13 mm	mm	29/30.5	29 / 30.5
	in.	1 9/64 / 1 13/64	1 9/64 / 1 13/64
height (H2) for AF 6 / 8 / 10 / 13 mm	mm	3.5 / 4 / 4 / 5.5	3.5 / 4 / 4 / 5.5
	in.	9/64 / 5/32 / 5/32 / 7/32	9/64 / 5/32 / 5/32 / 7/32
weight	kg / lbs	1.2 / 2.6	1.2 / 2.6
noise level	dB (A)	76	76
air hose dia.	mm / in.	6 / 1/4	6 / 1/4
air inlet pipe thread size		1/4" m	1/4" m

Performance data relate to an air pressure of 6.3 bar (90 PSI)

Standard Equipment: hose coupling with nozzle and nipple · Set of Torque Adjustment Tools · Set of Clutch Springs



*) Measurement plus length of bit or sockets is space requirement.

Technical Data

Screwdriver Style		Motor Size 3		
Driver reversible, right shut-off drive square male E12.5 (1/2")	type order no.	377-731 U - E12.5 396037 C	377-331 U - E12.5 396037 D	377-431 U - E12.5 396037 E
screws	up to	M 6	M 8	M 10
torque min.	Nm / in. lbs	4 / 35	4 / 35	4 / 35
torque max.	Nm / in. lbs	11 / 97	20 / 177	35 / 310
speed, idling	rpm	700	350	180
air consumption	m ³ /min / cfm	0.4 / 14	0.4 / 14	0.4 / 14
length (L)	mm / in.	376 / 14 ^{13/16}	376 / 14 ^{13/16}	376 / 14 ^{13/16}
weight	kg / lbs	2 / 4.4	2 / 4.4	2 / 4.4
noise level	dB (A)	75	75	75
air hose dia.	mm / in.	10 / 3/8	10 / 3/8	10 / 3/8
air inlet pipe thread size		1/4" f	1/4" f	1/4" f
Driver reversible, right shut-off drive square male E10 (3/8")	type order no.	377-731 U - E10 400611 C	377-331 U - E10 400611 D	377-431 U - E10 400611 E
screws	up to	M 6	M 8	M 10
torque min.	Nm / in. lbs	4 / 35	4 / 35	4 / 35
torque max.	Nm / in. lbs	10 / 88.5	19 / 168	33 / 292
speed, idling	rpm	730	365	190
air consumption	m ³ /min / cfm	0.4 / 14	0.4 / 14	0.4 / 14
length (L)	mm / in.	374 / 14 ^{23/32}	374 / 14 ^{23/32}	374 / 14 ^{23/32}
weight	kg / lbs	1.9 / 4.2	1.9 / 4.2	1.9 / 4.2
noise level	dB (A)	75	75	75
air hose dia.	mm / in.	10 / 3/8	10 / 3/8	10 / 3/8
air inlet pipe thread size		1/4" f	1/4" f	1/4" f

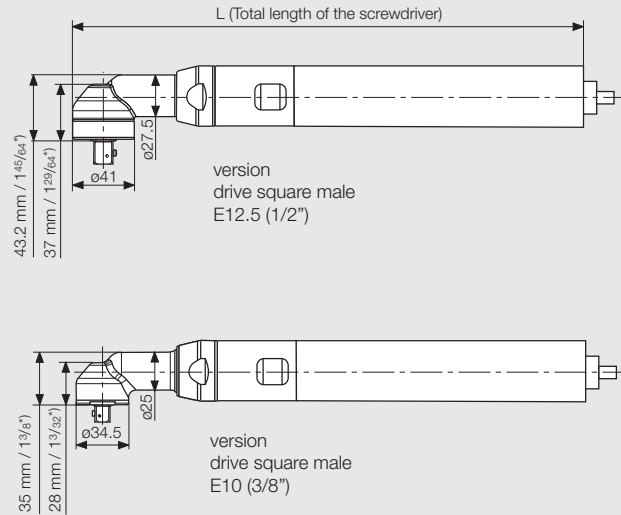
Performance data relate to an air pressure of 6.3 bar (90 PSI)

Standard Equipment: hose coupling with nozzle and nipple · Set of Torque Adjustment Tools · Set of Clutch Springs

Optional Equipment: exhaust hose (0.6 m / 2 ft.), order no. 398703 A

Screwdriver Style	Suitable tool inserts and connecting components
external square drive DIN 3121 – E 6.3 (1/4")	with a drive as per DIN 3121 – G 6.3 (1/4")
external square drive DIN 3121 – E 10 (3/8")	with a drive as per DIN 3121 – G 10 (3/8")
external square drive DIN 3121 – E 12.5 (1/2")	with a drive as per DIN 3121 – G 12.5 (1/2")
internal hex. drive DIN 3126 – D 6.3 (1/4")	with a drive as per DIN 3126 – C 6.3 (1/4")
internal hex. drive DIN 3126 – F 6.3 (1/4")	with a drive as per DIN 3126 – E 6.3 (1/4")
internal hex. drive DIN 3126 – D 8 (5/16")	with a drive as per DIN 3126 – C 8 (5/16")

Please also find suitable tool inserts in our brochure D 3320 E.



*) Measurement plus length of bit or sockets is space requirement.

Technical Data

Screwdriver Style		Motor Size 4		
Driver reversible, right shut-off drive square male E12.5 (1/2")	type order no.	377-941 U - E12.5 379100 B	377-741 U - E12.5 379100 C	377-841 U - E12.5 379100 D
screws	up to	M 10	M 10	M 12
torque min.	Nm / in. lbs	8 / 70.8	8 / 70.8	8 / 70.8
torque max.	Nm / in. lbs	32 / 283	46 / 407	65 / 575
speed, idling	rpm	410	270	185
air consumption	m ³ /min / cfm	1	1	1
length (L)	mm / in.	464 / 18	464 / 18	464 / 18
weight	kg / lbs	2.3 / 5	2.3 / 5	2.3 / 5
noise level	dB (A)	78	78	78
air hose dia.	mm / in.	10 / ³ / ₈	10 / ³ / ₈	10 / ³ / ₈
air inlet pipe thread size		1/4" f	1/4" f	1/4" f
Driver reversible, right shut-off drive square male E10 (3/8")	type order no.	377-941 U - E10 400638 B	377-741 U - E10 400638 C	
screws	up to	M 10	M 10	
torque min.	Nm / in. lbs	7 / 62	7 / 62	
torque max.	Nm / in. lbs	30 / 265.5	44 / 389	
speed, idling	rpm	430	285	
air consumption	m ³ /min / cfm	1	1	
length (L)	mm / in.	461 / 18 ⁵ / ₃₂	461 / 18 ⁵ / ₃₂	
weight	kg / lbs	2.2 / 4.8	2.2 / 4.8	
noise level	dB (A)	78	78	
air hose dia.	mm / in.	10 / ³ / ₈	10 / ³ / ₈	
air inlet pipe thread size		1/4" f	1/4" f	

Performance data relate to an air pressure of 6.3 bar (90 PSI)

Standard Equipment: hose coupling with nozzle and nipple · Set of Torque Adjustment Tools · Set of Clutch Springs

Optional Equipment: exhaust hose (0.6 m / 2 ft.), order no. 398703 A

DEPRAG

DEPRAG SCHULZ GMBH u. CO.

P.O. Box 1352, D-92203 Amberg, Germany

Kurfürstenring 12-18, D-92224 Amberg

Phone (096 21) 371-0, Fax (096 21) 371-120

www.deprag.com

info@deprag.de



CERTIFIED AS PER DIN EN ISO 9001
